

# Design of a Gentle Damping System for a Weak Wooden House

Takahito Adachi, Kenji Takahara

**Abstract**— This paper proposes a control system to reduce vibrations in existing wooden houses that are insufficient in strength, using a simple semi-active damper having a variable viscous damping coefficient. A linear motion generator is used as the semi-active damping device. It is simply structured with a magnet bar and coils. When the magnet bar is linearly moved by vibrations, electromotive force is generated in the coils. The viscous damping coefficient of the semi-active damping device can be changed by adjusting the current flowing through the coils. The current is varied by PWM signal. Here, the proposed semi-active damping system is numerically equipped on a mimic column beam framework model. The performance of the semi-active damping system was simulated using real earthquake wave form data. The simulation showed that the maximum displacement of the wooden frame is reduced by about 2.5 [cm] using the proposed system in comparison with the same frame without a damping device. Furthermore, it was confirmed that the proposed damping system reduced the stress to a screw fixing anchor by up to 26.7 [N/mm<sup>2</sup>].

**Index Terms**—Semi-Active Damper, Linear Generator, Viscous Damping Coefficient, Weak Wooden House.

## I. INTRODUCTION

Because there are many active tectonic faults in Japan, many earthquakes have occurred recently, such as the Great Hanshin Earthquake, Great East Japan Earthquake and Kumamoto Earthquake [1]. Those earthquakes destroyed many houses which had low earthquake resistance [2], [3]. Such houses need to be made more earthquake resistant. Oil dampers or MR fluid dampers which are equipped on large buildings have high vibration damping capability [4], [5]. The viscous damping coefficient of an oil damper is unable to be changed. Although the viscous damping coefficient of an MR fluid damper can be changed, it needs a large amount of electricity. If those damping systems are equipped on a small, weak tenement-house that shares a wall with another room, a large amount of stress is sometimes applied to part of the house's wall. As a result of anti-earthquake reinforcement, there is a high possibility that such a weak house would be exposed to danger of collapse [6]. Therefore, it is necessary that an inexpensive damping system appropriately reduce vibration within an allowable range that does not destroy the house.

The authors have been developing a linear-motion generator which converts traveling vibrations to electricity [7]-[10]. The damping force of the generating device can be varied by adjusting the current flowing through the coils of the device [9]. Therefore, it is applied here as a semi-active damping device for a small weak wooden house.

In this study, we designed a semi-active damping system that is controllable by electronic signals. It was numerically equipped on a mimic column beam framework model. The performance of the semi-active damping system was simulated using real earthquake wave form data.

## II. MATERIALS AND METHOD

Figure 1 shows the fundamental structure of the damping device. It has a cylindrical construction including with stator coils and a permanent magnet mover. The mover is an Nd Fe-B magnet bar in the center of the device. Magnets are positioned with the same magnet poles facing each other. Because the stator coils wound in opposite directions to the next coil are connected in series, as shown Fig.1, the generated power synchronizes and becomes large.

When the mover is linearly driven, electromotive force is generated. The motion of the mover is hindered according to the value of the current that flows through the coil. Therefore, the viscous damping force can be changed by adjusting the current flowing through the coil. The damping device is designed based on dynamic analysis by magnetic-structure interaction analysis using the FEM software, ANSYS (CYBERNET SYSTEMS Co. Ltd.). As for the simulation result, the maximum damping coefficient of the damping device is 139.1 [N s/m] [9]. A resistance and a bidirectional switch are connected to both ends of the stator. The bidirectional switch consists of two MOSFETs. The bidirectional switch is driven by a PWM signal. The damping device is connected to the resistance through the bidirectional switch when the MOSFETs are turned. Because the current flowing through the coils is changed at alternating intervals by PWM signal, the viscous damping force is controlled as needed. The viscous damping coefficient of the damping device is varied from 24 [N s/m] to a maximum value of 139.1 [N s/m] when the duty ratio of the PWM signal is set from 0 [%] to 100 [%]. The maximum power consumption to drive the control circuit is only 68.2 [□W].

In the case that a part of a wooden house is reinforced, stress by an earthquake sometimes concentrates on the reinforced part, as mentioned above. Figure 2 illustrates a mimic column beam framework model. The proposed damping system is numerically applied to the framework model. The motion equation of the model is as follows:

$$\begin{bmatrix} m_1 + m_2 & m_2 \\ m_2 & m_2 \end{bmatrix} \begin{bmatrix} \ddot{x}_1(t) \\ \ddot{x}_2(t) \end{bmatrix} + \begin{bmatrix} c_1 & 0 \\ 0 & c_2 \end{bmatrix} \begin{bmatrix} \dot{x}_1(t) \\ \dot{x}_2(t) \end{bmatrix} + \begin{bmatrix} k_1 & 0 \\ 0 & k_2 \end{bmatrix} \begin{bmatrix} x_1(t) \\ x_2(t) \end{bmatrix} = \begin{bmatrix} F_1(t) \\ F_2(t) \end{bmatrix}$$

(1)

Here,  $x_1$  and  $x_2$  are the displacement of the frame from the base line and the displacement of concentrated mass, respectively.

The developed damping device is equipped as a damper  $c_2$  in Fig. 2. Therefore, the value of  $c_2$  is changed by the PWM signal, which is described in equation (2).

$$c_2(k) = c_{con} + c_{act}(k) \quad (2)$$

The parameter  $c_{con}$  is the smallest value of the viscous damping coefficient of the damper  $c_2$  in the case that the current of the stator is zero. The changeable parameter  $c_{act}(k)$  is determined by equation (3). A PI controller is designed to calculate the change value of controlling input  $\Delta c(k)$ . However, the damping system never decreases  $c_2(k)$  less than  $c_{con}$ .

$$c_{act}(k) = c_{act}(k-1) + \Delta c(k) \quad (3)$$

$$\Delta c(k) = K_i e(k) + K_p \{e(k) - e(k-1)\} \quad (4)$$

$$e(k) = x_d - x_1(k) \quad (5)$$

In the aforementioned equations,  $e(k)$  is the amount of error in the position from a desired value of the position of the wall  $x_d$  and  $\Delta e(k)$  is the change in the amount error  $e(k)$ .

In this system, the viscous damping coefficient is considered as an input. On the other hand, an earthquake vibration is assumed as a large disturbance. The whole system is described as a bilinear system which has a product of the input and the state variable. Therefore, the proposed system has nonlinear and time-varying characteristics. Parameters  $K_i$  and  $K_p$  are determined by trial and error. The parameters are shown in Table 1.

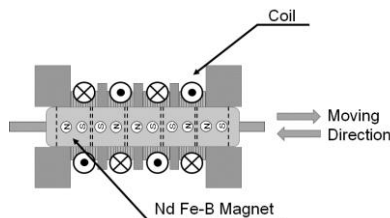


Fig. 1: Fundamental structure of the damping device.

Table 1: The parameters of simulation

The mass of the entire pillar $m_1$ [kg]	16
The displacement of concentrated mass $m_2$ [kg]	16
The viscous damping coefficient of the entire pillar $c_1$ [N s/m]	50
The Viscous damping coefficient in damping device $c_{con}$ [N s/m]	50
The spring constant of the entire pillar $k_1$ [N / m]	1875
The spring constant in damping device $k_2$ [N / m]	1000
Integral gain $K_i$	1.43
Proportional gain $K_p$	6.31

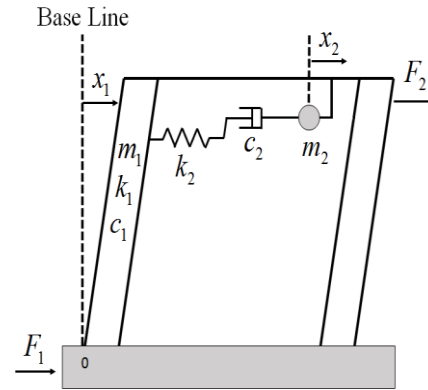


Fig. 2: Analytical model

### III. SIMULATIONS AND RESULTS

The damping devices, which are connected in parallel, are equipped on the mimic column beam framework model, as mentioned above. A simulation is performed by MATLAB (The MathWorks, Inc.). The control result is shown in Fig. 3, when a pulsed input force of 130 [N] is given to the frame as an external force for 0.1 [s]. Figure 3 (b) shows the change of displacement  $x_1(t)$ . In Fig. 3 (b), the solid line is the controlled displacement and the dotted line is the displacement with no damping system. When the proposed damping system is used, the vibration of the frame is reduced more gently compared with the vibration with no controller.

Real earthquake vibration is used as an external input in the experiment illustrated in Fig. 4. From the simulation result, the proposed system also decreases the vibration of 2.5 [cm] at most. Furthermore, stress applied to screws fixing anchors of frames is also analyzed by a simulation [11]. Figure 5 (a) shows a model for a structural analysis. By the simulation, the proposed damping system reduces the stress to a screw fixing anchor by up to 26.7 [N/mm<sup>2</sup>]. Therefore, the proposed damping system decreases the effect by applied repeatedly small stress and contributes to reduce damage of a weak house in an earthquake.

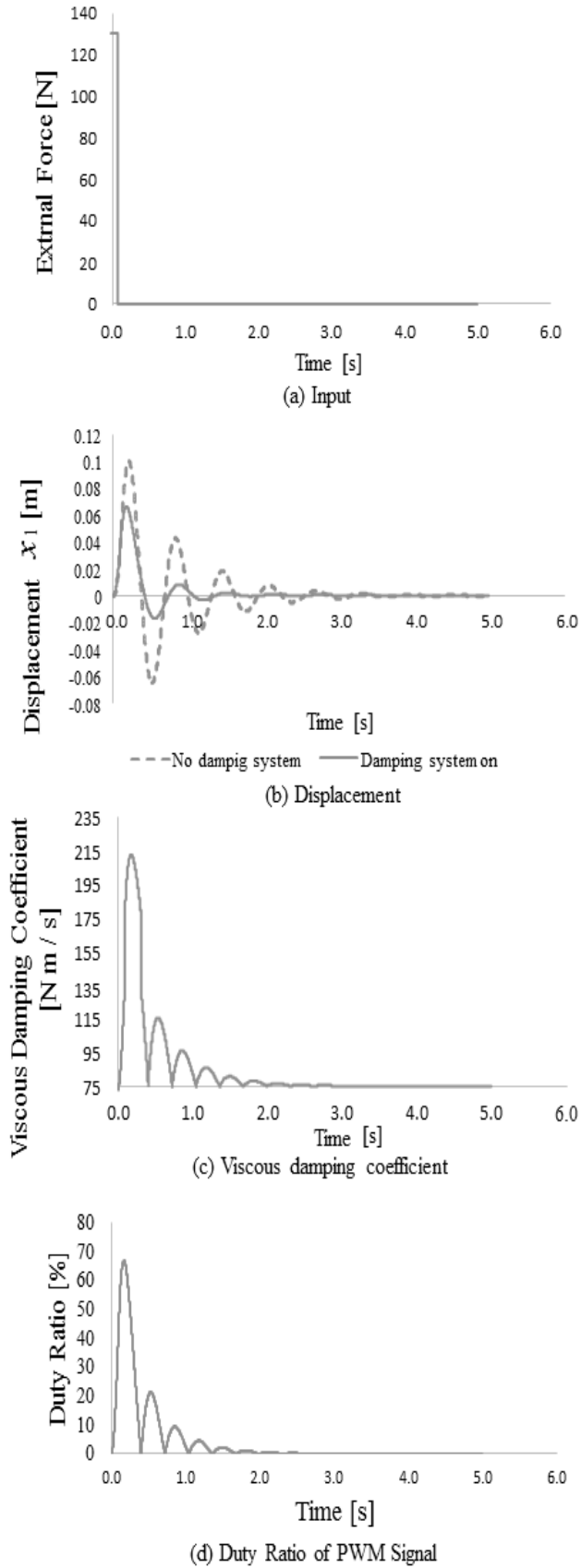


Fig. 3: Vibration control simulation in the case that a pulsed input force of 130 [N] is given to the frame as an external force for 0.1 [s]

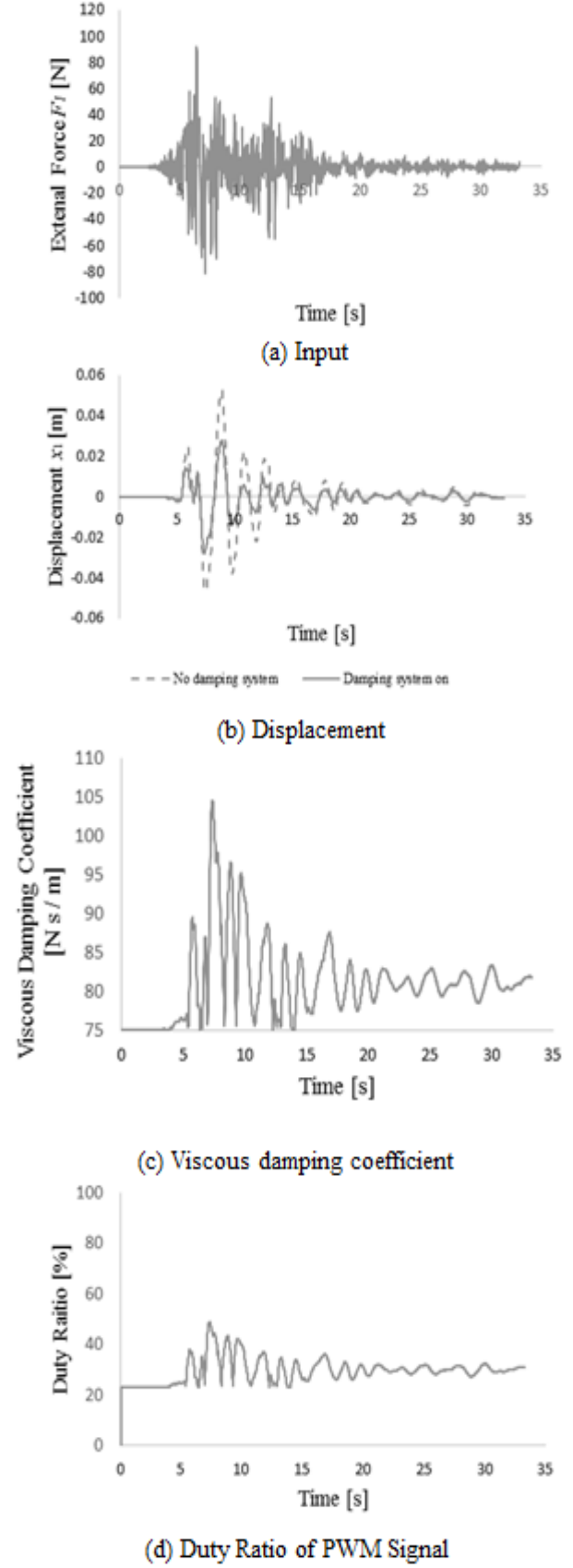
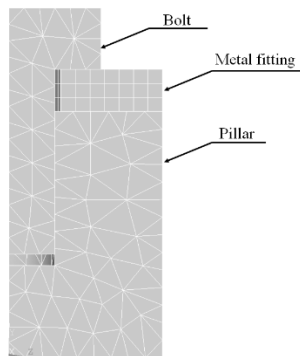
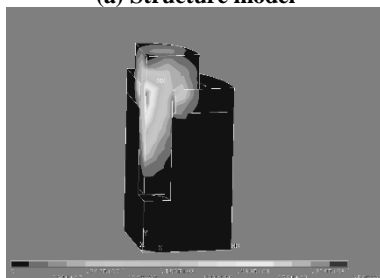


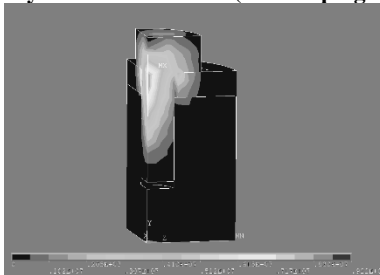
Fig. 4: Vibration control simulation in the case that a real vibration of the Hanshin Earthquake is given to the frame as an external input



(a) Structure model



(b) Analysis results of stress (No damping system)



(c) Analysis results of stress (Damping system on)

Fig.5: Structure model of screw

#### IV. CONCLUSION

This paper proposed a semi-active damping device and a damping system for reducing vibration of existing wooden houses supposed to be insufficient in strength. The proposed system applied to the mimic column beam framework model numerically. The proposed system was confirmed to be useful for gently reducing the vibration of the framework model when the real earthquake wave form is given as the external force by the simulations.

The characteristics of the vibration are thought to be changed due to mounting position of the damping devices. Therefore, the authors are investigating the design of a modified control system for cooperation action by plural damping devices. In the future, we will produce a prototype of the semi active damping system including a control system. Furthermore, we will design desired reducing vibration form models and a control system based on the model.

#### ACKNOWLEDGMENT

This study is partially supported by the Grants-in-Aid for research expenses of the Electronics Research Laboratory of Fukuoka Institute of Technology. We are grateful for their support.

#### REFERENCES

- [1] Japan Meteorological Agency The Seismological Bulletin of Japan, [http://www.data.jma.go.jp/svd/eqev/data/bulletin/index\\_e.html](http://www.data.jma.go.jp/svd/eqev/data/bulletin/index_e.html), 2016.
- [2] City of Kobe. Comprehensive Strategy for Recovery from the Great Hanshin-Awaji Earthquake, 25-43. <http://www.city.kobe.lg.jp/safety/hanshinawaji/revival/promote/img/English.pdf>, 2011.
- [3] National Institute for Land and Infrastructure Management. (2016), Commission analyzing the causes of building damage in Kumamoto earthquake Retrieved from <http://www.nilim.go.jp/lab/hbg/kumamotozisinnininkai/20160912pdf/0912issshiki.pdf>.
- [4] Sato E and Fujita T, "Study on Semi-Active Seismic Isolation System with MR Damper —2nd Report, Excitation Tests for Semi-Active Seismic Isolation System with MR Damper—", SEISAN KENKYU, Vol. 57, No. 1, pp. 67-70, 2005.
- [5] Shinohara M, Isoda H and Ishimoto A, "ANALYTICAL SIMULATION OF DISPLACEMENT RESPONSES FOR TWO-STORY WOOD FRAMES WITH OIL-DAMPERS SHEAR WALL AND DESIGN VALUE FOR WOOD SHEAR WALL WITH DAMPER", Journal of Structural and Construction Engineering (Transactions of AIJ), Vol. 75, No. 648, pp. 377-384, 2010.
- [6] EcoReform inc, [https://www.eco-inc.co.jp/qa/2012/04/post\\_103.php](https://www.eco-inc.co.jp/qa/2012/04/post_103.php), 2012.
- [7] Takahara K, Ohsaki S, Itoh Y, Ohshima K and Kawaguchi H, "Characteristic Analysis and Trial Manufacture of Permanent-Magnetic Type Linear Generator", IEEJ Trans. IA, Vol. 127, No. 6, pp. 669-674, 2007.
- [8] Kubo K, Takahara K and Ito Y, "Measurement of basic characteristics of Electromagnetic Linear Actuator", Record of Joint Conference of Electrical and Electronics Engineers in Kyushu 2010, pp. 376-377, 2010.
- [9] Adachi T and Takahara K, "Analysis and measurement of damping characteristic of linear generator", International Journal of Applied Electromagnetics and Mechanics, vol.52, pp. 1503-1510, 2016.
- [10] Adachi T and Takahara K, "Structural Design of A Linear-Motion Type Semi-Active Damper by Finite Element Method", International Journal of Natural Sciences Research, vol.4, No.6, pp. 107-111, 2016.
- [11] Tanaka M and Hongo K, "Fatigue Strength of Bolt of Bolted Joint Subjected to Repeated Load", Journal of the Japan Society for Precision Engineering, Vol. 54, No. 8, pp. 1481-1486, 1988.

#### AUTHOR BIOGRAPHY



**T. Adachi** graduated the master's program (Electrical Engineering) at the Graduate School of Electrical Engineering of Fukuoka Institute of Technology in 2013. He then became a teacher of the Houkoku Gakuen High School. He entered the latter half of the doctoral program at the Graduate School of

Material Science and Production Engineering of Engineering at Fukuoka  
Institute of Technology in 2016.



**K. Takahara** completed the doctoral program at the Graduate School of Medicine at Tokyo Medical and Dental University in 1997, then became a research associate in the Department of Electrical and Electronic Engineering at Muroran Institute of Technology. He became an associate professor in 2005 and later a professor in the Department of Electrical Engineering at Fukuoka Institute of Technology in 2013. Ph.D.(Eng.).