

Study of Parallel Universe Time Travel and Missing Aircrafts

Kavya Vaddadi, V.V.S. Nikhil Bharadwaj, T.V.Vineeta, B.V.Sai Anoop, M. Sai Dheeraj, Uday kiran. Poothota, Yarramshetti. Deva Harsha, A. Venkat Sai, K. Sashank, V. Mounika Reddy
 Design Engineer, Vaddadi Engineering Design & Analysis Services, Greater Noida, India.

Department Of Aeronautical Engineering, Department Of Mechanical Engineering , Department Of ECE, MLR Institute Of Technology, Hyderabad, India.

Abstract: - *The topic parallel universe and third eye mystery revolves around the various levels of the multi verse or parallel universe and the third eye, also known as pineal gland inside the brain. The Secret Projects of brain are mentioned and abilities of third eye and its functions including ancient religions and cultures are discussed and the recent discoveries regarding the DNA relation with worm holes is explained. The time travel with pineal gland and its examples are described. The relationship between a consciousness and its brain has traditionally been the subject of two competing theories. The older is dualism. This holds that a human being does not just consist of a physical body with its brain but possesses something extra, ontologically independent of the body. The other is monism that holds that a person consists only of a physical body with its brain and that consciousness is in some as yet undetermined way a product of the brain and of the brain only.*

Keywords: Parallel universe, DNA Relation, DNA Phantom Effect, Quantum Disc.

I. INTRODUCTION

PARALLEL UNIVERSE

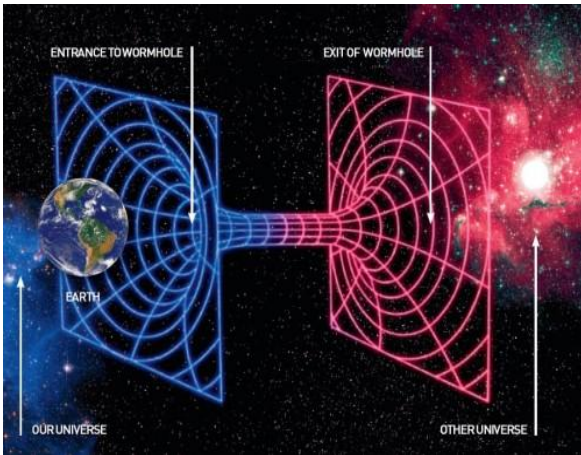
Is there a copy of you reading this document? A person who is not you but who lives on a planet called Earth, with misty mountains, fertile fields and sprawling cities, in a solar system with eight other planets? The life of this person has been identical to yours in every respect. But perhaps he or she now decides to put down this article without finishing it, while you read on. The idea of such an alter ego seems strange and implausible, but it looks as if we will just have to live with it, because it is supported by astronomical observations. The simplest and most popular cosmological model today predicts that you have a twin in a galaxy about 10^{28} meters from here. This distance is so large that it is beyond astronomical, but that does not make your doppelgänger any less real. The estimate is derived from elementary probability and does not even assume speculative modern physics, merely that space is infinite (or at least sufficiently large) in size and almost uniformly filled with matter, as observations indicate. In infinite space, even the most unlikely events must take place somewhere. There are infinitely many other inhabited planets, including not just one but infinitely many that have people with the same appearance, name and memories as you, who play out every possible permutation of your life choices. You will probably never see your other selves. The farthest you

can observe is the distance that light has been able to travel during the 14 billion years since the big bang expansion began. The most distant visible objects are now about 4×10^{26} meters away—a distance that defines our observable universe, also called our Hubble volume, our horizon volume or simply our universe. Likewise, the universes of your other selves are spheres of the same size centered on their planets. They are the most straightforward example of parallel universes. Each universe is merely a small part of a larger “multi verse.” By this very definition of “universe,” one might expect the notion of a multi verse to be forever in the domain of metaphysics. Yet the borderline between physics and metaphysics is defined by whether a theory is experimentally testable, not by whether it is weird or involves unobservable entities. The frontiers of physics have gradually expanded to incorporate ever more abstract (and once metaphysical) concepts such as a round Earth, invisible electromagnetic fields, time slowdown at high speeds, quantum super positions, curved space, and black holes. Over the past several years the concept of a multi verse has joined this list. It is grounded in well-tested theories such as relativity and quantum mechanics, and it fulfills both of the basic criteria of an empirical science: it makes predictions, and it can be falsified. Scientists have discussed as many as four distinct types of parallel universes. The key question is not whether the multi verse exists but rather how many levels it has.



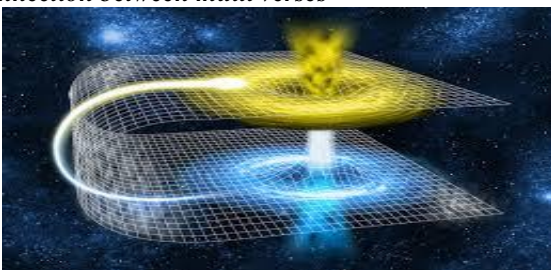
II. BRIEF EXPLANATION

LEVELS OF MULTIVERSE



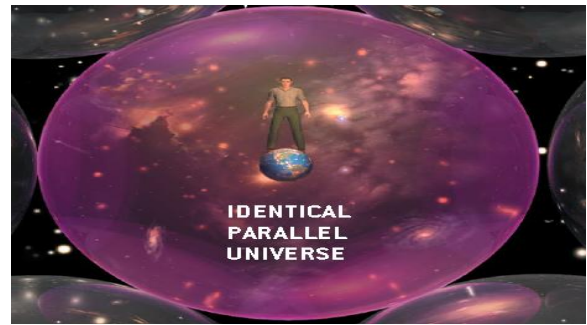
One of the many implications of recent cosmological observations is that the concept of parallel universes is no mere metaphor. Space appears to be infinite in size. If so, then somewhere out there, everything that is possible becomes real, no matter how improbable it is. Beyond the range of our telescopes are other regions of space that are identical to ours. Those regions are a type of parallel universe. Scientists can even calculate how distant these universes are, on average. And that is fairly solid physics. When cosmologists consider theories that are less well established, they conclude that other universes can have entirely different properties and laws of physics. The presence of those universes would explain various strange aspects of our own. It could even answer fundamental questions about the nature of time and the comprehensibility of the physical world.

Connection between multi verses



LEVEL- 1 MULTIVERSE

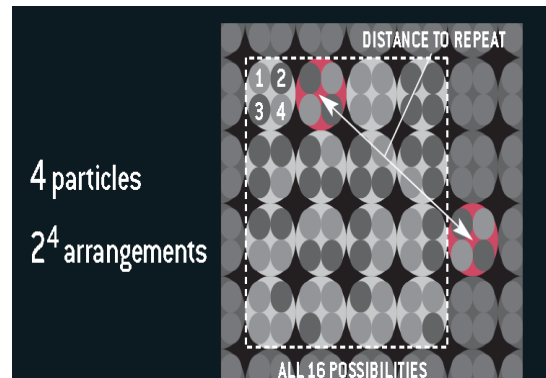
THE SIMPLEST TYPE of parallel universe is simply a region of space that is too far away for us to have seen yet. The farthest that we can observe is currently about 4×10^{26} meters, or 42 billion light years—the distance that light has been able to travel since the big bang began. (The distance is greater than 14 billion light-years because cosmic expansion has lengthened distances.) Each of the Level I parallel universes is basically the same as ours. All the differences stem from variations in the initial arrangement of matter.



How Far Away Is a Duplicate Universe?

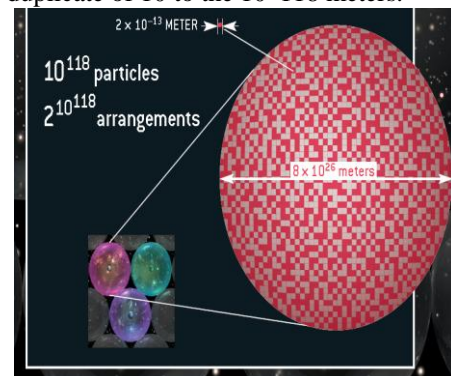
III. EXAMPLE UNIVERSE

Imagine a two-dimensional universe with space for four particles. Such a universe has 2^4 , or 16, possible arrangements of matter. If more than 16 of these universes exist, they must begin to repeat. In this example, the distance to the nearest duplicate is roughly four times the diameter of each universe.



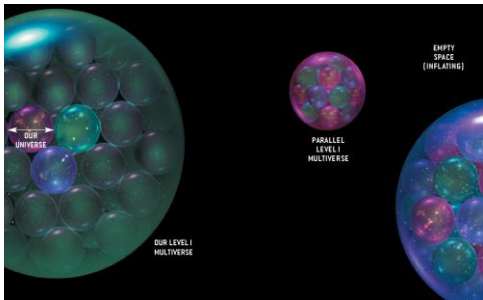
IV. OUR UNIVERSE

The same argument applies to our universe, which has space for about 10^{118} subatomic particles. The number of possible arrangements is therefore 2 to the 10^{118} , or approximately 10 to the 10^{118} . Multiplying by the diameter of the universe gives an average distance to the nearest duplicate of 10 to the 10^{118} meters.



LEVEL II MULTIVERSE

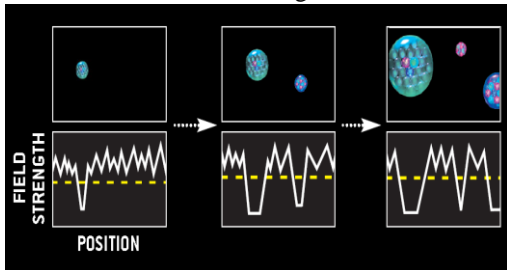
A SOMEWHAT MORE ELABORATE type of parallel universe emerges from the theory of cosmological inflation.



The idea is that our Level I multi verse—namely, our universe and contiguous regions of space—is a bubble embedded in an even vaster but mostly empty volume. Other bubbles exist out there, disconnected from ours. They nucleate like raindrops in a cloud. During nucleation, variations in quantum fields endow each bubble with properties that distinguish it from other bubbles.

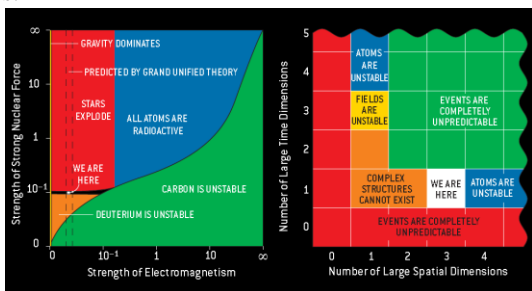
V. BUBBLE NUCLEATION

A QUANTUM FIELD known as the inflaton causes space to expand rapidly. In the bulk of space, random fluctuations prevent the field from decaying away. But in certain regions, the field loses its strength and the expansion slows down. Those regions become bubbles.



Evidence

COSMOLOGISTS INFER the presence of Level II parallel universes by scrutinizing the properties of our universe. These properties, including the strength of the forces of nature (right) and the number of observable space and time dimensions (far right), were established by random processes during the birth of our universe. Yet they have exactly the values that sustain life. That suggests the existence of other universes with other values.



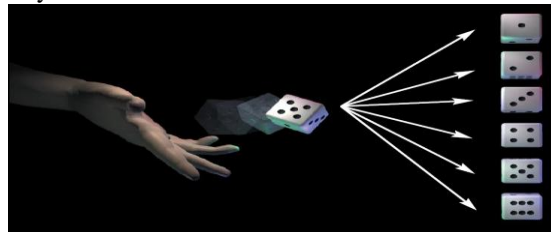
LEVEL III MULTIVERSE

QUANTUM MECHANICS PREDICTS a vast number of parallel universes by broadening the concept of “elsewhere.” These universes are located elsewhere, not

in ordinary space but in an abstract realm of all possible states. Every conceivable way that the world could be (within the scope of quantum mechanics) corresponds to a different universe. The parallel universes make their presence felt in laboratory experiments, such as wave interference and quantum computation.

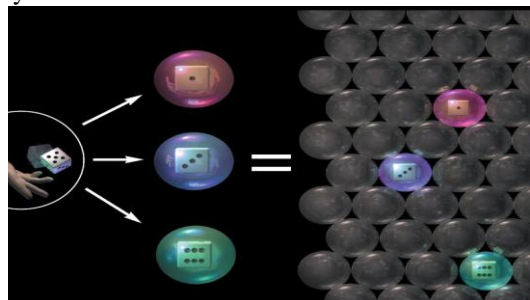
Quantum Dice

IMAGINE AN IDEAL DIE whose randomness is purely quantum. When you roll it, the die appears to land on a certain value at random. Quantum mechanics, however, predicts that it lands on all values at once. One way to reconcile these contradictory views is to conclude that the die lands on different values in different universes. In one sixth of the universes, it lands on 1; in one sixth, on 2, and so on. Trapped within one universe, we can perceive only a fraction of the full quantum reality.



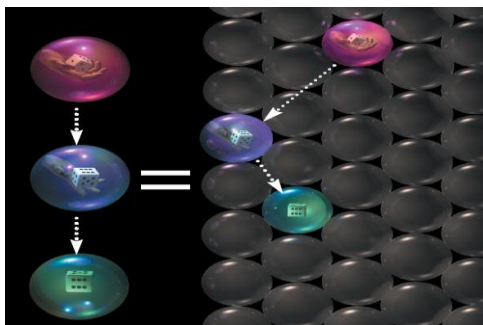
VI. ERGODICITY

ACCORDING TO THE PRINCIPLE of ergodicity, quantum parallel universes are equivalent to more prosaic types of parallel universes. A quantum universe splits over time into multiple universes (left). Yet those new universes are no different from parallel universes that already exist somewhere else in space—in, for example, other Level I universes (right). The key idea is that parallel universes, of whatever type, embody different ways that events could have unfolded.



The Nature of Time

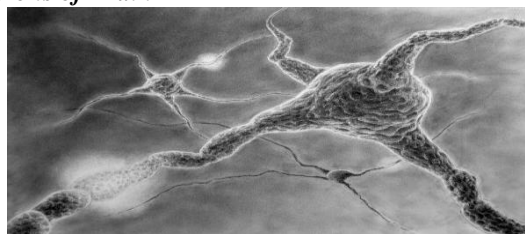
MOST PEOPLE THINK of time as a way to describe change. At one moment, matter has a certain arrangement; a moment later, it has another (left). The concept of multi verses suggests an alternative view. If parallel universes contain all possible arrangements of matter (right), then time is simply a way to put those universes into a sequence. The universes themselves are static; change is an illusion, albeit an interesting one.



THIRD EYE OR PINEAL GLAND-METATONIN Research

METATONIN is the pineal gland secretion that helps us access higher understanding.

Neurons of Brain



VII. BRAIN INITIATIVE PROJECT

Washington DC April 2013, Barack Obama Disclosed the Government Funded secret Project named: **BRAIN-Brain Research through Advancing Innovative Neuro technologies** “We have a chance to improve the lives of not only millions but also billions of people on this planet through the research that’s done.” US President unveils an ambitious government funded research project titled **BRAIN INITIATIVE** designed to map the human brain and promises to shed new light on how the humans learn, think, remember and create. By accelerating the development and application of innovative technologies, researchers will be able to produce a revolutionary new dynamic picture of the brain that, for the first time, shows how individual cells and complex neural circuits interact in both time and space. Long desired by researchers seeking new ways to treat, cure, and even prevent brain disorders, this picture will fill major gaps in our current knowledge and provide unprecedented opportunities for exploring exactly how the brain enables the human body to record, process, utilize, store, and retrieve vast quantities of information, all at the speed of thought.

Barack Obama revealing about BRAIN Project



BRAIN initiative Project White house



VIII. THE SCIENCE OF OUT-OF-BODY CONSCIOUSNESS

Presently, the scientific community is in the early stages of recognizing this phenomenon. METAtonin induced OBC events have been experienced by many of us in different degrees of intensity, and they have undoubtedly contributed to the inspiration of countless artists, researchers and writers of the past. Also, one must also question the validity of OB Experiences; does the brain fabricate the sensation of being out of the body by simply accessing past recollections? Or, indeed, is the OBE subject actually observing present real-time reality? Perhaps there are several types of OB Consciousness, some being veridical (verifiably real) and some being hallucinatory. Anthony Peake in his recent book, *The Out of Body Experience* takes a very serious look at the validity of OB Experiences and comes to the conclusion that OB Consciousness is actually not out of the body but most likely take place within the realm of the brain itself or in a holographic personal parallel reality which he describes as an "intrasomatic" experience (experienced from within). He furthermore suggests that the body, particularly every cell in the body, is a repository for information that OB Consciousness can access. His theory is that individual cells intercommunicate to create a holographic cloud of information and that within this cloud can be found micro Einstein-Rosen wormholes that allow OB Consciousness to access distant parts of the universe and parallel realities. This speculation may seem a bit over the top, but recent discoveries at the **Russian Academy of Sciences** may actually verify the above and furthermore expand our comprehension of how DNA shapes our reality in more ways than just providing a genetic code. It all has to do with what our scientists call "junk" DNA; that 95% of DNA that seems to be useless repetitive information, The Russians under the leadership of biophysicist and molecular biologist Pjtor Garjajev have pursued a much more who listic approach and have come up with some surprising results. The human genome project was a massive under taking; it was essentially an examination and tabulation of molecular makeup of the human gene, no small feat in itself. However, it was

basically a biological identification process and a very important first step. Dr. Garjajev, on the hand, assembled a team of biologists, physicists and linguistic experts and pursued a more "wide angle" approach to understanding DNA from a biophotonic (coherent light intercommunication) and linguistic perspective. Garjajev's linguistic experts detected the basic elements of a language structure in the sequences of "junk" DNA that mirrors and may prove to be the origin of basic human speech patterns (which was theorized by Noam Chomsky as early as the late 1950s). In a reverse manner, it was discovered and verified, human speech, under certain conditions, can actually modify the sequence pattern of DNA! Furthermore, DNA is actually a crystalline structure capable of supporting and producing coherent light (discovered by Dr. Alfred Fritz-Popp) which in turn provides a mode of synchronous communication for all the cells of the body as suggested by Dr. Jeremy Narby. The collective crystalline structure of the body can also resonate and respond to the larger human morphogenetic field of evolving collective human consciousness. In addition, coherent light stimulated DNA creates a magnetic disturbance in the space it occupies. If the DNA is removed, the magnetic disturbance field remains in the vacuum space that the DNA molecule once occupied! This is known as the "**DNA phantom effect**". It is possible that this lingering magnetic field is actually a micro magnetic wormhole, indicating the vibratory energy of DNA may also intermingle with small amounts of "dark energy" and provide a segue to parallel realities. Adherents of Out-of-Body Consciousness claim that the METAtionin-activated neural consciousness circuit is able to access parallel realities via the biophotonic cloud of information created by the cumulative presence and intercommunication of the 70 trillion DNA molecules in our body. Another theory of consciousness and consciousness travel based on intracellular biophotonic coherent light transmission has been developed by American anesthesiologist Professor Stuart Hammerhoff and British theoretical physicist Professor Roger Penrose. Known as the **Orch OR theory**, it is based on the microscopic tubular structures that support communication within the cellular structure. Microtubules are made from tubulin molecules that arrange themselves into a helical tube with 13 molecules in the circumference. These microscopic tubes can be of varying length, up to a meter long in some instances. Microtubules define and create the structure of the cytoplasm of cells; they are crystalline molecule and can support coherent light pulses as small a single light proton. It has also been detected that in this microscopic environment that light as a wave form has been quantum reduced to a become a particle – which is exactly what happens in the macro world when light as a wave form is "observed" (by a conscious being) and thus reduced to a particle form. When microtubules perform quantum

reduction in a collective or orchestrated manner, a state of quantum coherence is established, this, they conclude is the fundamental building block of consciousness and may constitute the field from which OBConsciousness is launched. The main reason why these scientists focused on microtubules is because interference with microtubule function can reduce a human into a sleeping unconscious state and is the basis for many anesthetic procedures.

Both of the above discussions touch on the subject of intracellular communication via coherent light. Recently Project ENCODE has determined that "junk" DNA actually contains the genome's hidden control circuitry. DNA is capable of performing thousands of different tasks, yet in the matrix of the body the DNA in each specific cell performs a discrete task. What informs the DNA as to it's specific function? How do the the 70 trillion DNA molecules communicate with each other? It seems that biophotonic light is the medium and if that is so, how is it transferred throughout the body? The answer to that question may be the Bonghan duct network, a threadlike tissue that permeates the body, envelopes every organ and even enters the lymphatic and blood vessels. These ducts can transfer DNA granules and may conduct coherent light signals. The distribution of these ducts seems to mirror the classic acupuncture meridians. In chapters 11 through 14 in his book *Consciousness Beyond Life*, cardiologist Dr. Pim van Lommel makes a thorough study of quantum physics; endless, timeless, nonlocal all-pervasive consciousness and the human brain which he sees as a transceiver that resonates with a discrete portion of the full spectrum of consciousness available. Universal consciousness functions much like the internet "cloud" of information that now permeates our biosphere; an individual human brain is much like a personal computer that accesses certain limited fields within the cloud and stores personal memories that are used to define one's individuality. He makes the point that when experiencing OBC or Near Death Consciousness, one is not actually transcending personal consciousness; that is because we are completely immersed in endless universal consciousness all the time, we just can't sense it. However the blinders can be dissolved when the brain is retuned to a broader spectrum. Dr. van Lommel suspects that junk DNA in conjunction with endogenous DMT secreted by the pineal gland may be one of the agents that can configure this retuning of the brain.

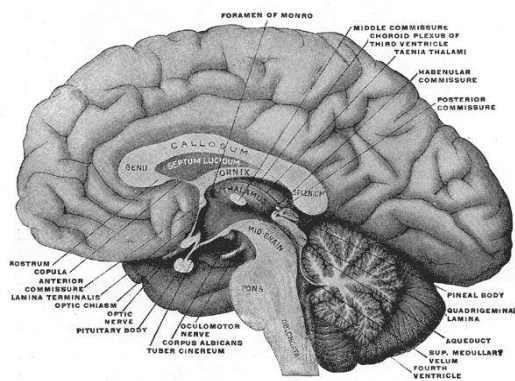
According to "quantum activist" Dr. Amit Goswami, a recalled OBE or NDE only becomes real when one returns to physical body consciousness after the event; at that moment of waking the potential for the memory of the event "collapses" into a real memory. The actual "seeing" of the event is a non-local quantum phenomenon and the seeing is witnessed by all personal consciousness present at the time; being non-local, it is all pervasive and unfocused, but it is a potential - to be actualized when the experiencer returns to self consciousness. It may seem somewhat confusing for those of us who have

experienced OBConsciousness: the experience feels very real and in the now when it is happening, at least that is how seemed during the experience. Dreams are remembered, Out-of-Body Consciousness is unmistakably *experienced*.

Another reason why there is so much interest in quantum phenomena is because memory is a basic factor of self consciousness, and the brain with its 100 trillion synapses plus the additional storage potential of glial cells does not even come close to containing enough storage capacity to hold the memories of an entire lifetime. According to Prof. Simon Berkovich of George Washington University the storage capacity of our brain would have to be 100,000 times denser than it is presently measured to be. In other words our brain would have to be that much larger (100 thousand times larger) to store all the sensory, emotional and mental history of a lifetime. So where is it stored? The answer may lie in a quantum connection to parallel holographic reality or to what is classically known as the akashik record, and this may be the same venue that is exercised by our consciousness when stimulated by METAtonin.

IX. THE PINEAL GLAND AT THE SEAT OF CONSCIOUSNESS

A good understanding of the pineal gland's placement in the brain will reveal its central location at the crossroads of consciousness. The drawing below is a view of the pineal gland from the side. **Pineal Gland side view inside Human brain**



The pineal gland can be seen resting on top of the midbrain tucked in the fold between the two lobes at the rear of the thalamus. The thalamus and the pineal gland are surrounded by cerebral spinal fluid.

X. EVOLUTION OF THE HUMAN RACE

Can the phenomenon of the Out-of Body Consciousness be a contributing factor to the evolution of the human race? According to Brazilian researcher and writer Dr. Waldo Vieira, the experience of lucid consciousness projection is absolutely essential, and he speaks with some authority for he has experienced and documented several thousand OBE's since the age of nine and has made a thorough study of consciousness in and

beyond the body. He calls the study of consciousness in all its manifestations conscientology, and the study of of lucid consciousness projection projectology. In his massive book, *Projectology*, he draws on over 2000 references and creates his own vocabulary to describe the many aspects of his knowledge. In 1981 he founded the Center for Continuing Consciousness which later evolved into the International Institute of Projectology and Conscientology (IIPC) in 1988. There are now 58 offices of IIPC throughout the world with their Center for Higher Studies of the Consciousness at Iguassu Falls, Brazil and the International Academy of Consciousness (IAC) in Portugal. The IIPC has over 74 research projects, over 100,000 members, several education centers and it has printed over 43 books and periodicals. Among the many topics Dr. Vieira covers, he talks about *thanatology* which is the study of psychological, social, cultural and religious impact of the inevitability of death. Most certainly our attitude towards death plays a major role in how we view the meaning of life. However, when one has experienced the continuity of consciousness and its indestructibility...when one has consciously traveled beyond the confines of the physical body and returns to their *extra physical hometown* which is the original hyper physical residence of fundamental personal consciousness, their understanding of the significance of our conduct here in this physical lifetime and how it affects our future lifetimes will enrich our experience of every moment here and now in this physical lifetime. As more individuals become familiar with this knowledge and experience, it is Dr. Vieira's firm belief that human society and the human race will evolve to a higher level. Dr. Vieira does not believe that there is any kind of physical mechanism related to consciousness projection, that it is a purely *energetic* phenomenon. He does not recognize the role of the pineal gland as part of the support mechanism of OBC.

X. THE PINEAL GLAND AND REINCARNATION

The pineal gland's higher function indirectly supports the existence of reincarnation in several ways. The METAtonin secretion at time of death escorts our individual/eternal consciousness as it separates from our transient ego/body consciousness on its return higher consciousness and in reverse manner during gestation and early childhood it eases the introduction of our eternal being to the material world and human society at a gentle pace all the way up to age 8. Why would such an endogenous neurochemical segue exist if there was not a higher consciousness to revert to? One must also consider the similar life after death insights reported in Near-Death-Experience studies. Reincarnation pioneer Dr. Ian Stevenson of the University Of Virginia Department Of Psychiatry, Division of Personality Studies interviewed over 2000 individuals who had accurate verifiable memories of past lives. Not surprisingly, the subjects who

had the clearest memories were those between the ages of 3 and 8; or read *Life before Life* by Jim Tucker M.D. who worked with Dr. Stevenson. Author Deepak Chopra in his *Life after Death: the Burden of Proof* is an inspiring book about the afterworld and David Wilcock in his latest book *The Synchronicity Key* provides several arguments for reincarnation. The Judeo-Christian culture does not generally accept reincarnation although Jesus was never known to directly denounce it, in fact some of his references supporting reincarnation can still be found in the New Testament. It is believed that biblical scholars deliberately obliterated any reference to reincarnation, and especially ignored the writings of Greek philosopher Origen, due to political pressure from the church for obvious reasons. Beginning with Emperor Constantine at the Council of Nicea in 325AD any references to reincarnation were thoroughly expunged during the finalizing of the New Testament. Furthermore at the Second Council of Constantinople in 533 AD the Roman government officially outlawed the concept of reincarnation on pain of excommunication, even death; this was reaffirmed twice again at Councils in Lyons and Florence in 1274 and 1439. There is no doubt that the Christian church chose to thoroughly expunge the concept of reincarnation from Western consciousness to keep firm control over the gates that lead to Heaven or Hell - the only possible destination for the afterlife. Due to this bias, it is quite possible that acceptance of the implications of the higher functions of the pineal gland may meet with some resistance. Coming to terms with reincarnation is coming to terms with the ecology of spirit; nothing is wasted.

XI. ELECTRICITY IN BRAIN

Brain Waves

When you drop a small stone in water, you see waves. Similarly our heart and our brain have wave patterns. The wave pattern of the heart is measured by **ECG** (electro cardiograph). The brain waves are measured by **EEG** (electro encephalograph).

Using the brain wave studies, scientists have discovered that our brain waves are of four types. The brain waves also have peaks that are similar to the peaks we see in water waves. The number of times the peak appears in one second is called "*cycles per second*". For example, the electricity in India is of 50 cycles per second.

- **Beta** (13 to 25 cycles per second)

This brain wave indicates that your conscious mind is in control. It indicates a mental state of logical thought, analysis, and action. You are alert and awake talking, speaking, doing, solving problems, etc.

- **Alpha** (8 to 12 cycles per second)

This brain wave indicates relaxation and meditation. It is a state of relaxed alertness good for inspiration, learning facts fast.

Theta (4 to 8 cycles per second)

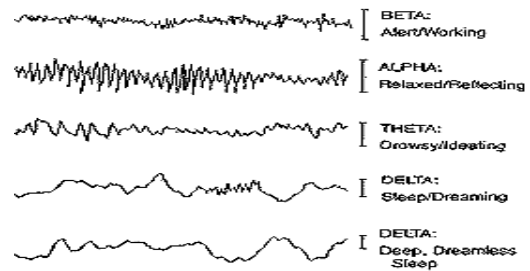
Deep meditation. This is associated with life-like imagination. This is best for suggestibility and inspiration. This brain wave is dominant in children of age 2 to 5.

Delta (0.5 to 4 cycles per second)

Deep dreamless sleep. Deep relaxation.

Brain Activity during Meditation

The **brain** is an **Electrochemical Organ** - using **electromagnetic energy** to function. Electrical activity emanating from the brain is displayed in the form of brainwaves.



There are four categories of these brainwaves. They range from the high amplitude, low frequency delta to the low amplitude, high frequency beta. Men, women and children of all ages experience the same characteristic brainwaves. They are consistent across cultures and country boundaries.

During meditation brain waves alter.

- **BETA** - 13-30 cycles per second - awaking awareness, extroversion, concentration, logical thinking - active conversation. A debater would be in high beta. A person making a speech, or a teacher, or a talk show host would all be in beta when they are engaged in their work.

ALPHA - 7-13 cycles per second - relaxation times, non-arousal, meditation, hypnosis

- **THETA** - 4-7 cycles per second - day dreaming, dreaming, creativity, meditation, paranormal phenomena, out of body experiences, ESP, shamanic journeys.

A person who is driving on a freeway, and discovers that they can't recall the last five miles, is often in a theta state - induced by the process of freeway driving. This can also occur in the shower or tub or even while shaving or brushing your hair. It is a state where tasks become so automatic that you can mentally disengage from them. The ideation that can take place during the theta state is often free flow and occurs without censorship or guilt. It is typically a very positive mental state.

- **DELTA** - 1.5-4 or less cycles per second - deep dreamless sleep

XII. MEMORY

Memory is one of the activities of the human mind, much studied by cognitive psychology. It is the capacity to retain an impression of past experiences. There are

multiple types of classifications for memory based on duration, nature and retrieval of perceived items.

The main stages in the formation and retrieval of memory, from an information processing perspective, are:

- Encoding (processing of received information by acquisition)
- Storage (building a permanent record of received information as a result of consolidation)
- Retrieval (calling back the stored information and use it in a suitable way to execute a given task)

A basic and generally accepted classification (depending on the duration of memory retention and the amount of stored information during these stages) identifies three distinct types of memory:

- sensory memory
- short-term memory
- long-term memory

The first stage corresponds approximately to the initial moment that an item is perceived. Some of this information in the sensory area proceeds to the sensory store, which is referred to as short-term memory.

Sensory memory is characterized by the duration of memory retention from milliseconds to seconds and short-term memory from seconds to minutes. Once the information is stored, it can be retrieved in a period of time, which ranges from days to years and this type of memory is called long-term memory. The sensory and short-term memories are bio-electrical types of memory, as they store information in form of electrical signals, whereas the long-term memory is a bio-chemical type of memory. When we are given a seven digit number, we can remember it only for a few seconds and then forget (short term memory). On the other hand we remember our telephone numbers, since we have stored it in our brain after long periods of consolidation (long term memory). The definition of working memory, which is erroneously used as a synonym of short-term memory, is based on not only the duration of memory retention but also the way how it is used in daily life activities. For instance, when we are asked to multiply 45 with 4 in our head, we have to perform a series of simple calculations (addition and multiplications) to give the final answer. The process of keeping in mind all this information for a short period of time is called working memory. Another good example is a chess player, who is playing with multiple opponents at the same time and trying to remember the positions of pieces in all games and using this information to make a good move, when required.

Long-term memory can further be classified as declarative (explicit) and procedural (implicit).

- *Explicit memory* requires *conscious recall*, in other words the information must be called back consciously when it is required. If this information is about our own lives (what we ate for breakfast in this morning, our birth date etc.), it is called *episodic memory*, if it concerns our knowledge about the

world (capital of France, presidents of US etc.), then it is called *semantic memory*.

- *Implicit memory* is not based on the conscious recall of information stored in our brain, but on the habituation or sensitization of learned facts. We perform better in a given task each time we repeat the task that is we use our implicit memory without necessarily remembering the previous experiences but using the previously learned behaviors unconsciously. For example, classical conditioning is one kind of implicit memory.

Another example is memory resulting from motor learning, which depends upon the cerebellum and basal ganglia.

XIII. TIME TRAVEL WITH WORM HOLES

In addition to facilitating effectively faster than light travel, wormholes could potentially be used as time machines, in the following sense first developed by Caltech theoretical physicist Kip Thorne. Imagine an advanced technology capable of creating, manipulating, and containing both ends of a stable, traversable, wormhole. Place one end in a laboratory on Earth and the other on a spacecraft capable of traveling through space at some reasonable fraction of the speed of light. Imagine the wormhole connecting the lab and spaceship is created in some future year, say 2500. Now keep one end on Earth and send the spaceship off in any direction at some appreciable fraction of the speed of light for a finite duration after which it will decelerate, turn around, and come back to Earth, and stop, so the wormholes ends are brought back together. Relativity tells us that the clocks of observers left on Earth and those in a relativistically moving spacecraft will begin to differ by an amount that depends on the speed of the craft. Since moving clocks run slow in relativity, a spaceship observer might experience a short subjective duration of say, a few weeks, but thousands or millions of years could pass in the external universe depending on how fast they were traveling. In this sense, time travel to the future is easy, and does not require wormholes, just a ship capable of moving at relativistic speeds. A spaceship executing the above maneuver might find itself thousands or millions of years in the future after stopping. Yet an observer at the wormhole mouth in the laboratory on Earth would still have its clock synchronized with the shipboard wormhole. If the ship finds it self, say in year 3500, after returning to Earth, any observers on the ship could return to the year 2500, traveling 1000 years into the past, simply by stepping through their shipboard wormhole back into the laboratory on Earth. In this way, wormholes could theoretically be used to travel into the past. However, in this case, the shipboard time travelers could never travel to before the year 2500. This poses a striking answer to the question, "If time travel to the past is possible, how come we aren't being constantly visited by time travelers from the future?" For these types of

wormhole time machines, the answer is simply, because they haven't been invented yet! Time travel of this sort can never take an observer back to before the original date when the wormhole connection was set up. This is a particularly clever resolution to an interesting time travel paradox.

Worm Hole, Black Hole and White hole



TIME TRAVEL WITH THIRD EYE

A person will be able to travel in time when the person contacts the same person who is in the parallel universe. This can be explained with the example of two discs which are rotating. When the discs contact with each other, the speed variation takes place, and hence the time of rotating varies. This way when there is contact is created between the two universes; there is a possibility of time travel and the person experiences déjà vu.

Third eye enabling time travel



The third eye or pineal gland is responsible to see things which we normally don't see with the rest two eyes. It is possible to go places with the mind alone. It's a doorway to connect to higher spirits and other worldly entities, the extraterrestrials. Pineal gland is hyper dimensional gateway, it's a functioning star gate within the brain, creates a bridge or worm hole inside the head.

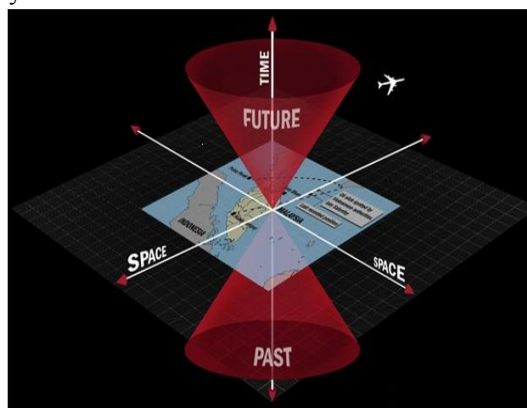
XIV. RUSSIAN DNA DISCOVERIES REGARDING TIME

The Russian scientists also found out that our DNA can cause disturbing patterns in a vacuum, thus producing magnetized wormholes! Wormholes are the microscopic equivalents of the so-called Einstein-Rosen bridges in the vicinity of black holes (left by burned-out stars). These are tunnel connections between entirely different areas in the universe through which information can be transmitted outside of space and time. The DNA attracts these bits of information and passes them on to our consciousness. This process of hyper-communication (telepathy, channeling) is most effective in a state of relaxation. In certain Earth healing projects, such light effects also appear on photographs. Simply put, this

phenomenon has to do with gravity and anti-gravity forces that are ever more stable forms of wormholes and displays of hyper-communication with energies from outside our time and space structure. Earlier generations that experienced such hyper-communication and visible vacuum domains were convinced that an angel had appeared before them: and we cannot be too sure to what forms of consciousness we can get access when using hyper-communication.

Malaysia Airlines Expands Investigation To Include General Scope Of Space, Time.

'Why Are We Even Here?' Officials Probe



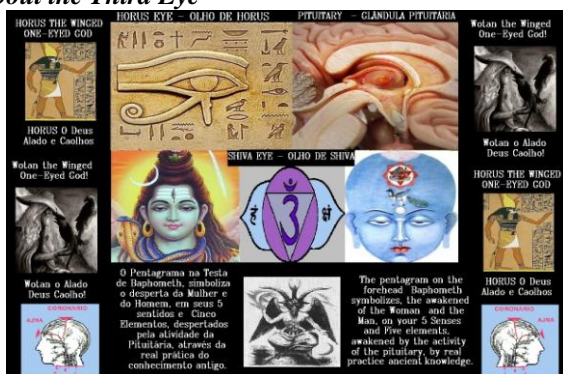
Assuming the actuality of wave function collapse, Malaysia Airlines officials say flight MH370 could currently be located in any possible alternate future.

KUALA LUMPUR, MALAYSIA—Following a host of conflicting reports in the wake of the mysterious disappearance of Malaysia Airlines Flight 370 last Saturday, representatives from the Kuala Lumpur-based carrier acknowledged they had widened their investigation into the vanished Boeing 777 aircraft today to encompass not only the possibilities of mechanical failure, pilot error, terrorist activity, or a botched hijacking, but also the overarching scope of space, time, and humankind's place in the universe. The airline, now in its fifth day of searching for the passenger jet carrying 239 passengers and crew, has come under fire for its perceived mishandling of the investigation, whose confusing and contradictory reports have failed to provide definitive answers on everything from how long the missing plane remained aloft after losing contact with air traffic controllers, to whether the flight made a radical alteration in its heading, to the very dimensions of space-time and the nature of reality, and what exactly it is that brought us into existence and imbued us with this thing we call life. Additionally, the airline confirmed it had expanded its active search area to include a several-hundred-square-mile zone in the Indian Ocean as well as each of the seven or 22 additional spatial dimensions posited by string theory. The aircraft may have been found, but many other aircrafts mystery have not been solved. The missing aircrafts have no clue or remains of aircraft. This needs the investigation of space time consideration of non-considered dimensions.

XV. CONCLUSION

The third eye has been already mentioned in many ancient cultures and religions, which raises the question that whether they are already aware of the existence of third eye and its functions. Hidder valley northern India on snow covered mountain in the heart of Himalayas lies a cave. Every summer thousands of people make journey on steep terrain to witness the formation of massive vertical ice where there lived most powerful gods of Hinduism. According to the mythology it was in this cave lord Shiva revealed the secrets of creation to his goddess wife parvathi.

Various Other Cultures and Religions Mentioning About the Third Eye



In Hinduism Shiva is illustrated as having third eye in the middle of his forehead. In iconography he is clearly depicted with vertical third eye in middle of his forehead. With that eye he can see things, he has clairvoyance. When his eye opens it also radiates lot of energy through that eye. When the third eye is opened up everything becomes clear and he will be able to communicate with everyone else because he is empowered with cosmic frequency. The ancient ancestors were aware of this third eye and its powers. If we humans will be able to unlock the secrets of third eye powers and activation: we can do miracles. We will be able to achieve healing power. We can visit other places even out of this earth only with mind and we will be able to do time travel. Also the considerations of space time dimensions and solving the mystery will surely have a link with the third eye ability.

REFERENCES

- [1] Parallel universe by Max tegmark.
- [2] THE PARADOXES OF TIME TRAVEL by David Lewis.
- [3] Time Travel and Time Machines by Chris Smeenk and Christian Wuthrich.
- [4] METAtonin Research, The Pineal Gland and the Chemistry of Consciousness (<http://metatoninresearch.org/>).